

RL417

Stacking Racks

Reg. 680.00\$

PRODUCT DESCRIPTION

Stacking Racks

ITEM#RL417

Width: 48"

Depth: 48"

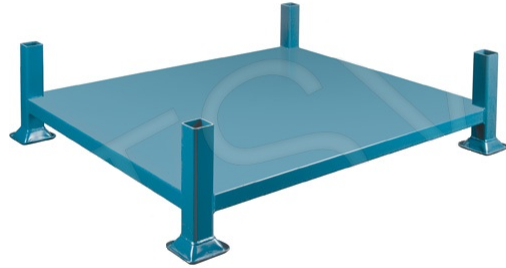
Capacity: 4000 lbs.

Inside Dimensions W" x D": 44 x 44

Weight: 115 lbs.

CLOSED BASE FRAME

Rugged all-welded 2" sq. tubing steel construction
Utilize warehouse airspace and lower the chances of damage that is associated with bulk stacking
Designed for storage of loose and palletized goods
Holds 4000 lbs. per rack and can be stacked 4 high
Durable blue enamel finish



Category: [Stacking racks](#)
