

RL416

---

## Stacking Racks

---

Reg. 617.00\$

### PRODUCT DESCRIPTION

Stacking Racks

ITEM#RL416

Width: 48"

Depth: 42"

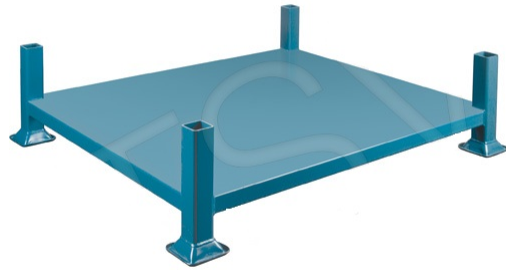
Capacity: 4000 lbs.

Inside Dimensions W" x D": 44 x 38

Weight: 110 lbs.

### CLOSED BASE FRAME

Rugged all-welded 2" sq. tubing steel construction  
Utilize warehouse airspace and lower the chances of damage that is associated with bulk stacking  
Designed for storage of loose and palletized goods  
Holds 4000 lbs. per rack and can be stacked 4 high  
Durable blue enamel finish



**Category:** [Stacking racks](#)

---