

RL416

Stacking Racks

Reg. 617.00\$

PRODUCT DESCRIPTION

Stacking Racks

ITEM#RL416

Width: 48"

Depth: 42"

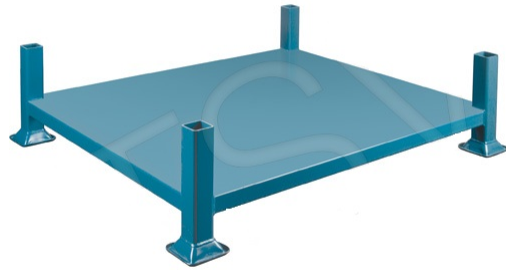
Capacity: 4000 lbs.

Inside Dimensions W" x D": 44 x 38

Weight: 110 lbs.

CLOSED BASE FRAME

Rugged all-welded 2" sq. tubing steel construction
Utilize warehouse airspace and lower the chances of damage that is associated with bulk stacking
Designed for storage of loose and palletized goods
Holds 4000 lbs. per rack and can be stacked 4 high
Durable blue enamel finish



Category: [Stacking racks](#)

PRODUCT DESCRIPTION

Stacking Racks

ITEM#RL416

Width: 48"

Depth: 42"

Capacity: 4000 lbs.

Inside Dimensions W" x D": 44 x 38

Weight: 110 lbs.

CLOSED BASE FRAME

Rugged all-welded 2" sq. tubing steel construction

Utilize warehouse airspace and lower the chances of damage that is associated with bulk stacking

Designed for storage of loose and palletized goods

Holds 4000 lbs. per rack and can be stacked 4 high

Durable blue enamel finish